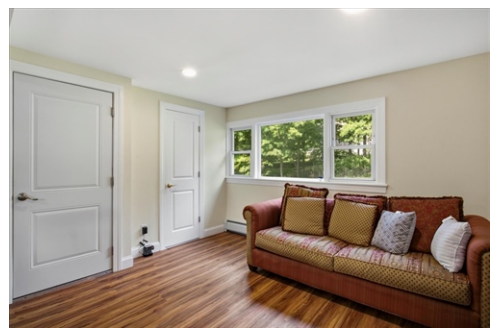




\$ 899,000



## 436 Storms Road, Valley Cottage, NY 10989

- » Beds: 5 | Baths: 3 Full, 1 Half
- » MLS #: 1019704
- » Single Family | 2,384 ft<sup>2</sup> | Lot: 15,245 ft<sup>2</sup>
- » More Info: [436StormsRoad.IsForSale.com](https://www.436StormsRoad.IsForSale.com)



**George John**  
 (914) 804-8693 (Mobile)  
 (914) 722-0700 (Office)  
[george@century21royal.com](mailto:george@century21royal.com)  
<https://www.royalfinehomes.com/>

### CENTURY 21®

ROYAL  
 697 Central Park Avenue  
 Scarsdale, NY 10583  
 (914) 722-0700

This is the home you have been waiting for! Welcome to 436 Storms Road, Valley Cottage, a stunning property that was completely renovated from the ground up just one year ago, offering the quality, comfort, and peace of mind of a virtually brand-new home. Every major component has been upgraded, including new walls, energy-efficient windows, new siding, a new roof, a newly paved driveway, and brand-new appliances. An open permit provides the flexibility to configure the home as either a four-bedroom or five-bedroom residence, allowing the next owner to tailor the space to their needs. Additional highlights include an oversized garage with plenty of room for vehicles, tools, and equipment. Located in the highly desirable Valley Cottage community, this exceptional home offers convenient access to major highways, making commuting throughout Rockland County, New York City, and Northern New Jersey a breeze. You will be just minutes from the popular Palisades Center, featuring premier shopping, dining, and entertainment options, as well as the nearby Park & Ride for easy transportation. Combining the benefits of new construction with the charm of an established neighborhood, this move-in ready home presents a rare opportunity for buyers seeking space, flexibility, and modern

